



Demographic and Income Profile

Morrow Village, OH
 Morrow Village, OH (3952374)
 Geography: Place

Warren County GIS Department

Summary	Census 2010	2016	2021
Population	1,188	1,245	1,302
Households	455	478	499
Families	298	331	342
Average Household Size	2.53	2.58	2.59
Owner Occupied Housing Units	261	316	340
Renter Occupied Housing Units	194	162	159
Median Age	38.6	44.6	45.0
Trends: 2016 - 2021 Annual Rate	Area	State	National
Population	0.90%	0.24%	0.84%
Households	0.86%	0.30%	0.79%
Families	0.66%	0.15%	0.72%
Owner HHs	1.47%	0.24%	0.73%
Median Household Income	2.49%	2.30%	1.89%

Households by Income	2016		2021	
	Number	Percent	Number	Percent
<\$15,000	56	11.7%	60	12.0%
\$15,000 - \$24,999	82	17.2%	83	16.6%
\$25,000 - \$34,999	67	14.0%	78	15.6%
\$35,000 - \$49,999	60	12.6%	33	6.6%
\$50,000 - \$74,999	92	19.3%	96	19.2%
\$75,000 - \$99,999	30	6.3%	36	7.2%
\$100,000 - \$149,999	53	11.1%	67	13.4%
\$150,000 - \$199,999	21	4.4%	28	5.6%
\$200,000+	16	3.4%	19	3.8%
Median Household Income	\$42,244		\$47,766	
Average Household Income	\$62,898		\$68,896	
Per Capita Income	\$24,954		\$27,397	

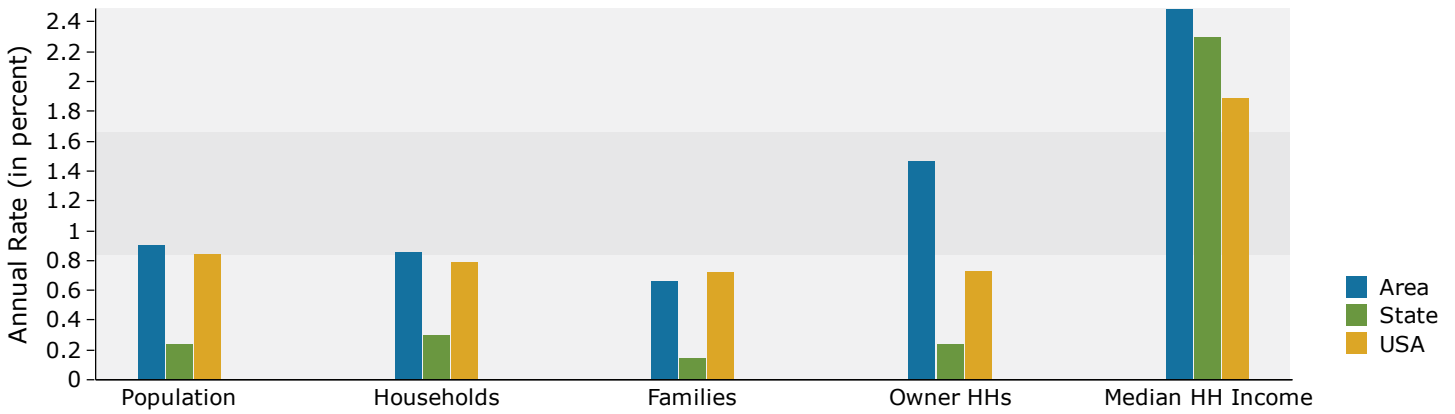
Population by Age	Census 2010		2016		2021	
	Number	Percent	Number	Percent	Number	Percent
0 - 4	94	7.9%	67	5.4%	68	5.2%
5 - 9	81	6.8%	71	5.7%	73	5.6%
10 - 14	71	6.0%	75	6.0%	80	6.2%
15 - 19	76	6.4%	71	5.7%	74	5.7%
20 - 24	52	4.4%	77	6.2%	60	4.6%
25 - 34	161	13.6%	130	10.4%	151	11.6%
35 - 44	156	13.1%	138	11.1%	144	11.1%
45 - 54	171	14.4%	188	15.1%	167	12.8%
55 - 64	138	11.6%	208	16.7%	215	16.5%
65 - 74	95	8.0%	128	10.3%	160	12.3%
75 - 84	68	5.7%	66	5.3%	80	6.2%
85+	25	2.1%	26	2.1%	28	2.2%

Race and Ethnicity	Census 2010		2016		2021	
	Number	Percent	Number	Percent	Number	Percent
White Alone	1,147	96.5%	1,192	95.7%	1,235	94.8%
Black Alone	5	0.4%	3	0.2%	5	0.4%
American Indian Alone	2	0.2%	3	0.2%	3	0.2%
Asian Alone	3	0.3%	10	0.8%	12	0.9%
Pacific Islander Alone	0	0.0%	0	0.0%	0	0.0%
Some Other Race Alone	7	0.6%	7	0.6%	9	0.7%
Two or More Races	24	2.0%	31	2.5%	39	3.0%
Hispanic Origin (Any Race)	24	2.0%	26	2.1%	32	2.5%

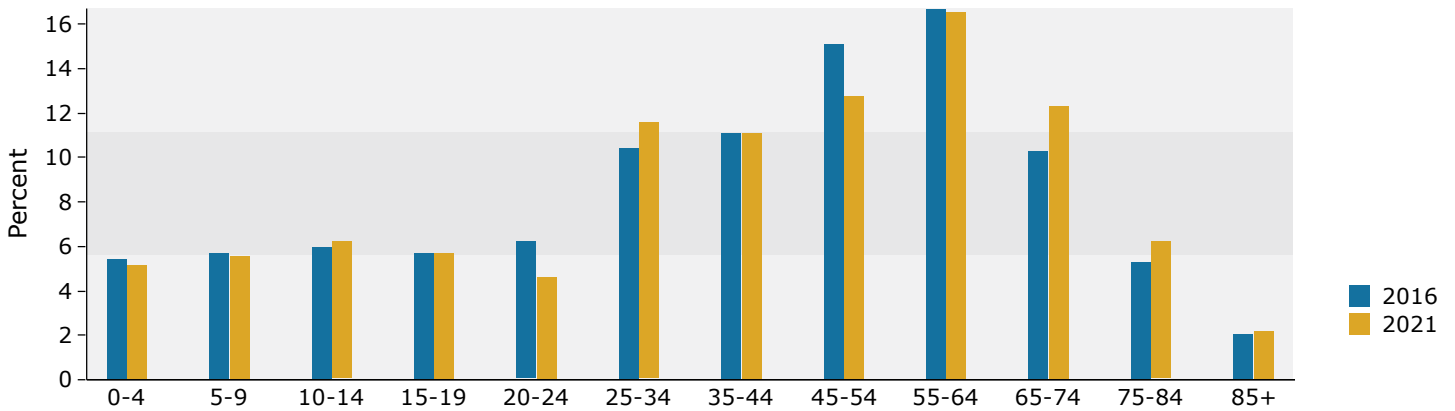
Data Note: Income is expressed in current dollars.

Source: U.S. Census Bureau, Census 2010 Summary File 1. Esri forecasts for 2016 and 2021.

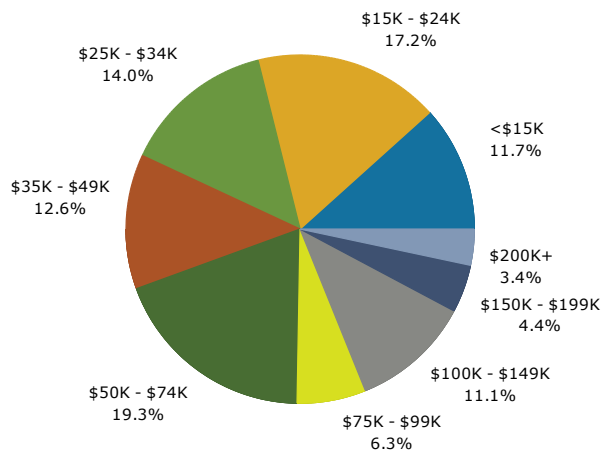
Trends 2016-2021



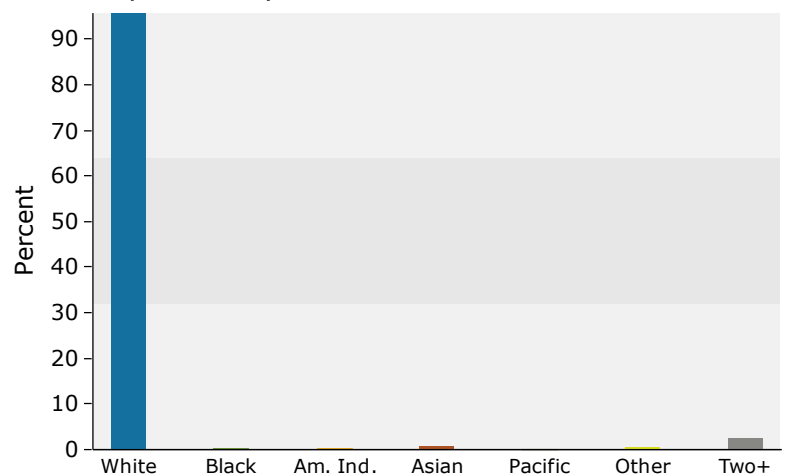
Population by Age



2016 Household Income



2016 Population by Race



2016 Percent Hispanic Origin: 2.1%

Source: U.S. Census Bureau, Census 2010 Summary File 1. Esri forecasts for 2016 and 2021.